

Newquay Branch Line Journey Figures

07/02/2019

Calendar year - by four week periods

Please see below for just the last five years

Period	2001	2006	2008	2009	2010	2011	2012	2013	2014	2015	2016	2017	2018	% 01 - 18	% 06 - 18	% 16 - 18	% 17 - 18
1 (10 Jan - 6 Feb 18)	1.000	1.413	1.312	1.845	2.618	3.128	4.245	3.105	2.917	2.954	3.176	3.421	3.481	242.1	142.2	9.6	1.8
2 (7 Feb - 5 Mar)	1.000	2.167	2.069	2.459	2.967	4.436	6.139	4.454	2.511	3.925	4.200	5.004	4.026	400.4	130.9	-4.1	-19.5
3 (6 Mar - 31 Mar)	1.000	1.230	2.353	3.133	3.003	3.982	7.292	4.644	3.957	5.387	5.372	4.851	4.945	385.1	294.3	-7.9	1.9
4 (1 Apr - 28 Apr)	2.000	2.468	3.126	6.706	7.325	8.694	7.584	5.983	6.731	7.817	6.767	8.782	6.703	339.1	255.8	-1.0	-23.7
5 (29 Apr - 26 May)	4.000	3.714	4.941	8.048	6.636	6.989	6.912	6.694	7.386	6.936	6.952	6.629	7.595	65.7	78.5	9.3	14.6
6 (27 May - 23 Jun)	6.000	7.306	5.023	9.029	8.275	6.734	7.747	9.088	8.470	6.849	8.504	7.806	9.035	30.1	6.8	6.2	15.7
7 (24 Jun - 21 Jul)	6.000	8.887	5.812	9.512	8.512	6.794	7.723	9.802	9.013	7.586	9.800	8.197	10.718	36.6	-7.8	9.4	30.8
8 (22 Jul - 18 Aug)	8.000	11.370	7.942	11.771	11.457	9.470	11.886	12.016	13.697	11.728	16.293	15.168	15.771	89.6	33.4	-3.2	4.0
9 (19 Aug - 15 Sep)	5.000	6.401	5.180	7.031	7.010	6.215	9.188	9.308	9.403	5.761	9.975	8.647	9.789	72.9	35.1	-1.9	13.2
10 (16 Sep - 13 Oct)	2.000	1.970	2.244	3.586	3.337	3.690	5.659	5.360	5.394	4.391	5.994	5.104	5.758	155.2	159.0	-3.9	12.8
11 (14 Oct - 10 Nov)	2.000	1.692	1.769	3.130	2.795	2.675	4.377	4.817	4.581	3.670	4.845	4.829	5.335	141.5	185.5	10.1	10.5
12 (11 Nov - 8 Dec)	1.000	0.991	1.173	2.214	1.156	2.257	2.904	3.112	3.044	3.000	3.490	3.205	3.634	220.5	223.5	4.1	13.4
13 (9 Dec - 5 Jan 19)	1.000	0.854	1.743	2.207	2.117	3.707	2.586	2.992	3.402	3.062	3.087	3.437	3.882	243.7	302.6	25.8	12.9
Total	40.000	50.462	44.687	70.671	67.208	68.771	84.242	81.375	80.506	73.066	88.455	85.080	90.672	112.7	68.6	2.5	6.6

	2001	2006	2008	2009	2010	2011	2012	2013	2014	2015	2016	2017	2018				
Full year	40.000	50.462	44.687	70.671	67.208	68.771	84.242	81.375	80.506	73.066	88.455	85.080	90.672	112.7	68.6	2.5	6.6

Return ticket counts as two journeys

Only local trains shown ie not the Summer through main line trains

2004/5 and 2006 have included four weeks of buses replacing trains for engineering work to take place.

In late 2006 and early 2007 there were further weeks of engineering work bus replacements, plus a landslip in January

2010 - three further weeks of bus replacements in October, plus landslips in Nov/Dec (another three weeks)

Half price Off Peak Day Return offer in Spring 2011 and 2012

Teddy promotion Feb half term 2017

P3 had only 25 days in 2010, compared to 31 in 2009

P4 in 2015 had 32 days compared with 26 days in 2014.

P4 in 2018 had 28 days compared with 29 in 2017 and 30 in 2016

Change to ORCATS allocations from May 2015

2015 Rail strikes - no service on Thurs 9 & 10 July, Sun 23 August, Sat, Sun & Mon 29, 30 & 31 Aug (B Hol)

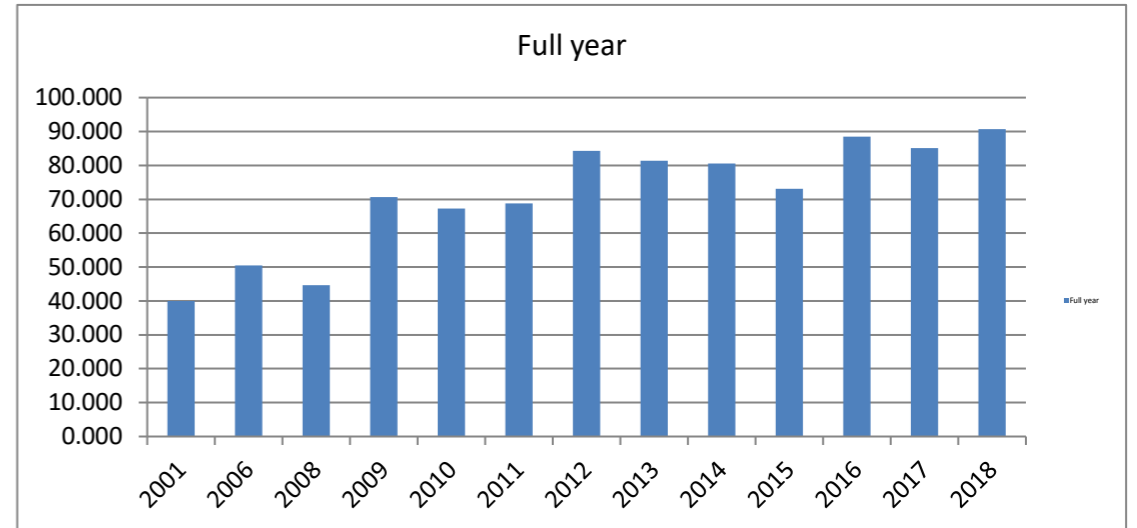
Threatened national strikes on 25 & 26 May (Whitsun Bank Hol) and 5 and 10/11 June (all called off at late notice)

% increase/decrease

Easter 15 3-6 Apr
 Easter 16 25-28 Mar
 Easter 17 14-17 Apr
 Easter 18 30 Mar - 2 Apr

Boardmasters 8 - 12 Aug 18

Local service largely replaced with special HSTs



2018 - snow closed the line on Thurs 1 and Fri 2 Mar
 Services across SW affected on these days and Sat 3 Mar.

Last five years

Period	2013	2014	2015	2016	2017	2018	% 13 - 18	% 16 - 18	% 17 - 18
1 (10 Jan - 6 Feb 18)	3.105	2.917	2.954	3.176	3.421	3.481	10.2	9.6	1.8
2 (7 Feb - 5 Mar)	4.454	2.511	3.925	4.200	5.004	4.026	12.3	-4.1	-19.5
3 (6 Mar - 31 Mar)	4.644	3.957	5.387	5.372	4.851	4.945	4.5	-7.9	1.9
4 (1 Apr - 28 Apr)	5.983	6.731	7.817	6.767	8.782	6.703	46.8	-1.0	-23.7
5 (29 Apr - 26 May)	6.694	7.386	6.936	6.952	6.629	7.595	-1.0	9.3	14.6
6 (27 May - 23 Jun)	9.088	8.470	6.849	8.504	7.806	9.035	-14.1	6.2	15.7
7 (24 Jun - 21 Jul)	9.802	9.013	7.586	9.800	8.197	10.718	-16.4	9.4	30.8
8 (22 Jul - 18 Aug)	12.016	13.697	11.728	16.293	15.168	15.771	26.2	-3.2	4.0
9 (19 Aug - 15 Sep)	9.308	9.403	5.761	9.975	8.647	9.789	-7.1	-1.9	13.2
10 (16 Sep - 13 Oct)	5.360	5.394	4.391	5.994	5.104	5.758	-4.8	-3.9	12.8
11 (14 Oct - 10 Nov)	4.817	4.581	3.670	4.845	4.829	5.335	0.2	10.1	10.5
12 (11 Nov - 8 Dec)	3.112	3.044	3.000	3.490	3.205	3.634	3.0	4.1	13.4
13 (9 Dec - 5 Jan 19)	2.992	3.402	3.062	3.087	3.437	3.882	14.9	25.8	12.9
Total	81.375	80.506	73.066	88.455	85.080	90.672	4.6	2.5	6.6

	2013	2014	2015	2016	2017	2018			
Full year	81.375	80.506	73.066	88.455	85.080	90.672	4.6	2.5	6.6

